

HEMET LIBRARY FOUNDATION

ADVENTUROUS ARMCHAIR TRAVELERS

PANAMA CANAL -
THE 100TH ANNIVERSARY
1914 – 2014

PRESENTATION
BY
CAROL FRANCES, PhD

FRIDAY, APRIL 4, 2014

PANAMA CANAL IN CONTEXT:

CHINA'S GRAND CANAL

EGYPT'S SUEZ CANAL

CHINA'S GRAND CANAL:

7TH CENTURY AND EARLIER

LONGEST IN THE WORLD

HANGZHOU - BEIJING

China's
Grand Canal
from
Hangzhou
to Beijing

Over 1,000
miles long



The Grand Canal Project was launched by Emperor Wen of the Sui Dynasty to ship grain collected in taxes from the south to the north of China.



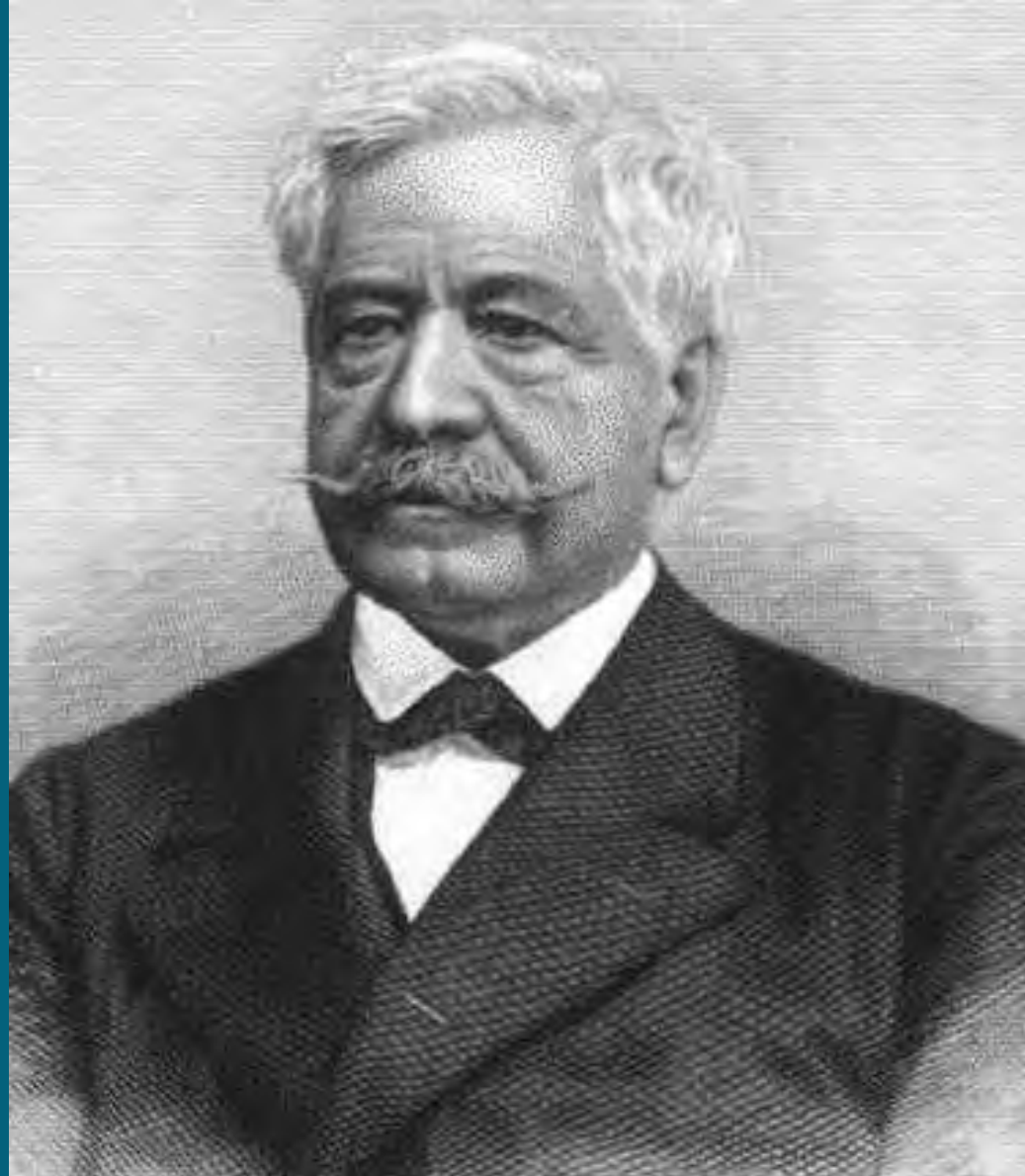


THE SUEZ CANAL

1859 - 1869



Suez Canal connects the Red Sea with the Mediterranean Sea.



Ferdinand de Lesseps, 1805 – 1894

French diplomat who secured Suez concession from Egypt



US Air Carrier in transit in the Suez Canal.

THE PANAMA CANAL

1914 - 2014





Theodore Roosevelt sitting on a steam shovel at the Panama Canal,
1906



Culebra cut in 1907



Panama Canal lock under construction in 1907.





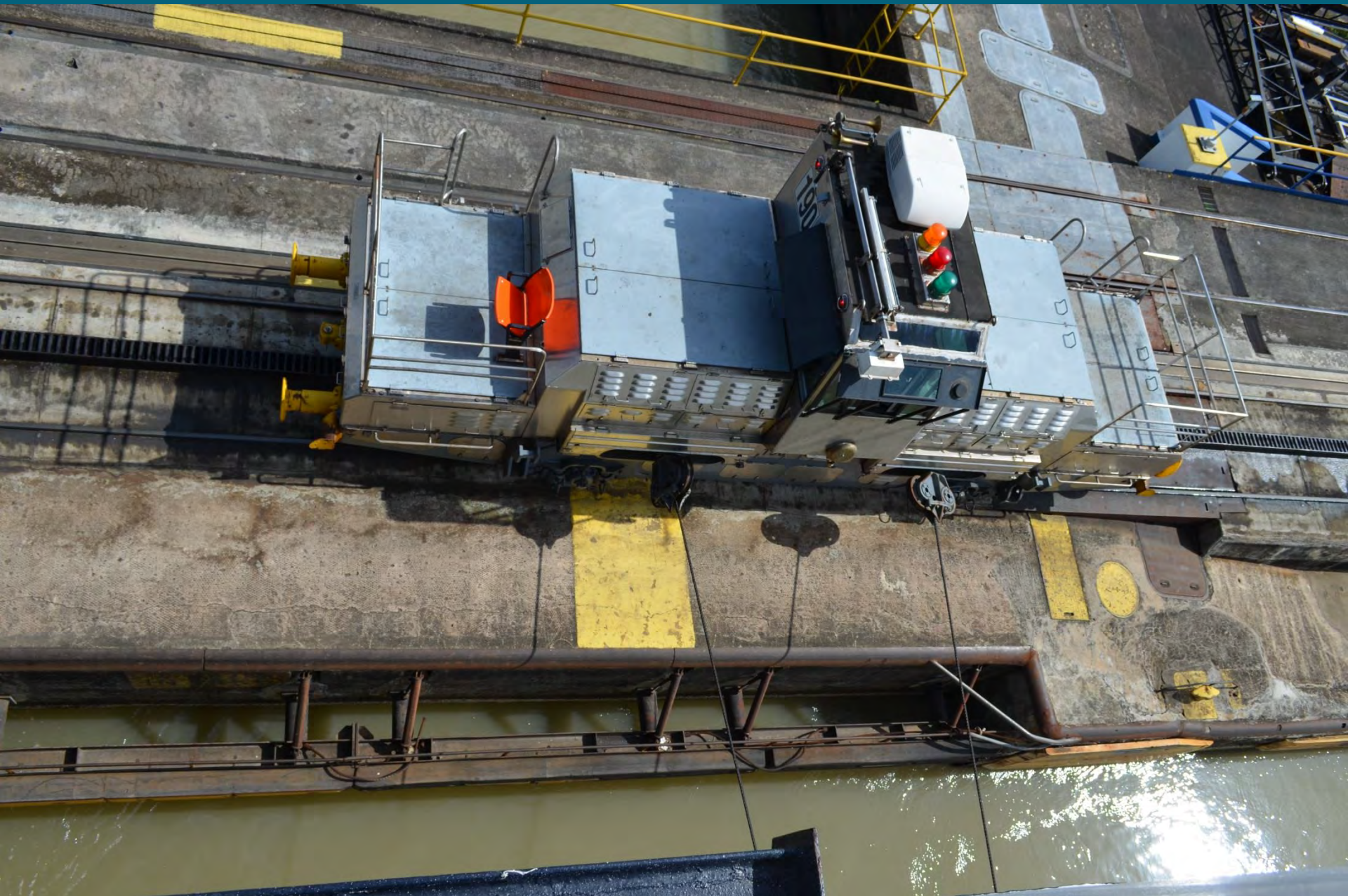






















1914



2014

PANAMA CANAL

GETTING THERE FROM LOS ANGELES:

Mexico

Guatemala

Nicaragua

Costa Rica

Panama

AND BACK TO FT. LAUDERDALE:

Columbia – Cartagena

Caribbean – Private island













AMERICA LINES CRUISE
100TH ANNIVERSARY
OF the historic
1914-2014

















MEXICO

HUALTULCO

BIRD WATCHING



Urraca
White-throated
Magpie-Jay
calocitta formosa



Calandria
Yellow-winged Cacique
casicus melanicterus



Chogüiro
Grat Kiskedee
pintagus sulphuraceus derbianus



♀ Tiqui Tiqui
Golden-cheeked
Woodpecker
c.c. chrysogenys



Colibrí Canelo
Cinnamon Hummingbird
a.r. rutila



Buho Pigmeo
Ferruginous
Pygmy-Owl
g. brasiliensis ridgwayi



Pajaro Burro
Rufous Momot
momotus m. mexicanus



Mosquero
Tropical Kingbird
t. melancholicus chloronotus



Mosquero Copetón
Ash-throated Flycatcher
m.c. cinerascens



Primavera
Rufous-backed Thrush (Robin)
turdus rufopalliatu



Matraquita (Chico Ratón)
Rufous-naped Wren
campylorhynchus rufinucha



AVES DE HUATULCO

No movimientos bruscos
Caminar en silencio
Caminar despacio

12



Trogon
Citreoline Trogon
t. citreolus sumichrasti



Carpintero Lineado y pico-claro
Lineated & Pale-billed
Woodpecker
dryocopus lineatus
campephilus g. guatemalensis



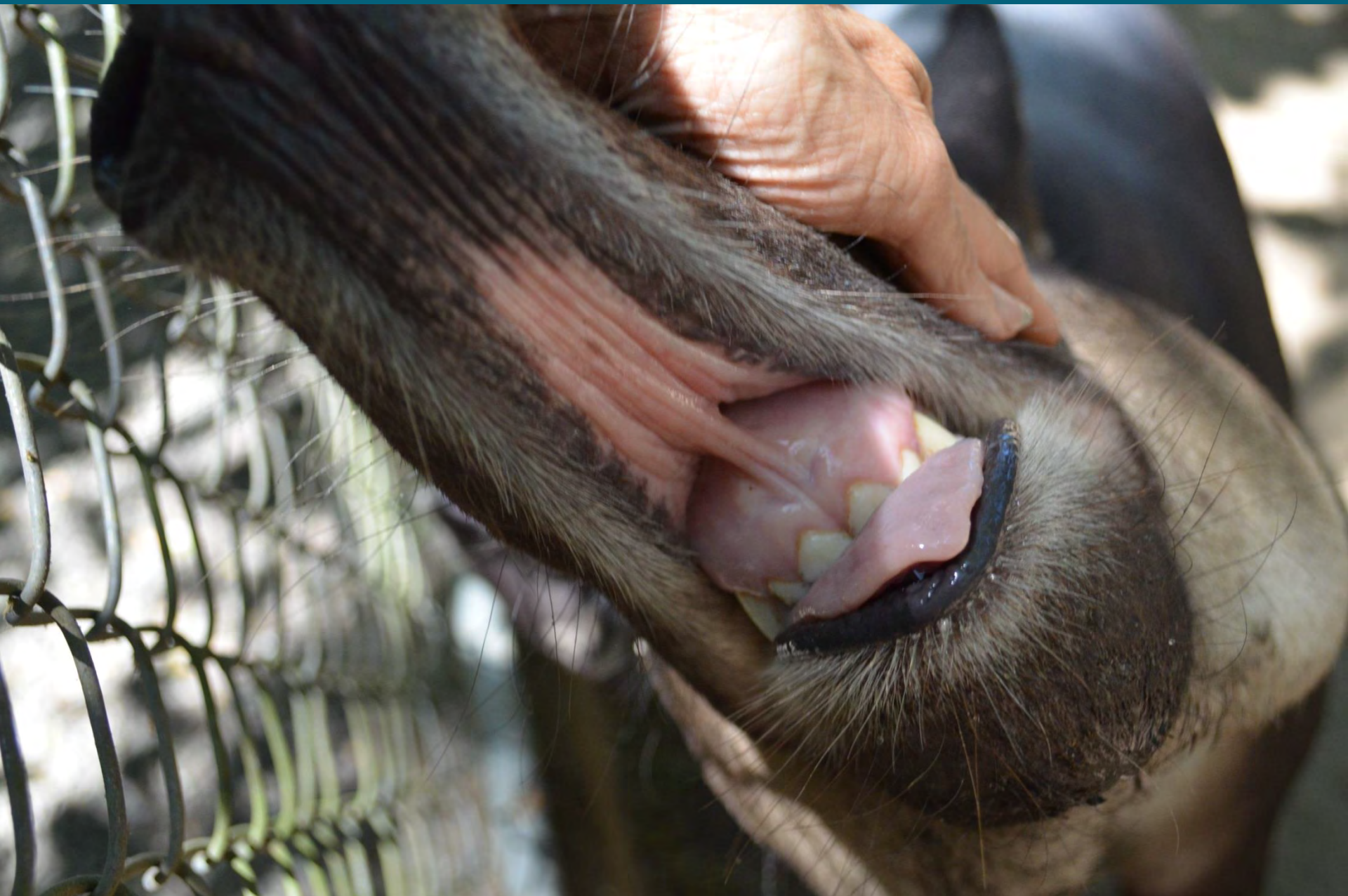
A rectangular wooden sign with a weathered, greyish-brown surface is mounted on a chain-link fence. The word "Tapiir" is carved into the wood in a white, sans-serif font. The sign is positioned horizontally and is secured by several metal rings or bolts. The background shows a blurred view of green foliage and trees, suggesting an outdoor setting. The fence is made of metal chain-link, and a horizontal metal bar is visible above the sign.

Tapiir











Part 2 ...

GUATEMALA

ANTIGUA

DISCOVERY OF JADE

SANTA DOMINGO CONVENT